

DRIVEN BY AIR.



Auto Air Chuck

Once the air chuck is on,
it stays on!



After 40 years of fantastic service PCL will say good bye to the most robust reliable CO2 single clip on connector in the range.

The new and improved air chuck has been designed to enhance and bring the PCL connector range into the 21st century.

Through extensive in-house and external testing, the auto air chuck has been proven to be as robust and reliable as ever.

Alloy/steel wheels have got bigger with intricate designs making the valves more difficult to reach with the human hand. The new range consists of standard straight as well as 90-degree connectors for those difficult to reach valves, with both hose tail fitting and female threaded versions available.

Constructed with the finest Zinc Alloy, Aluminium and brass, the new air chucks fit with a vice like grip, operated with a simple but effective thumb push button which quickly releases the tyre valve, reducing non-value added time.



www.pclairtechnology.com

A HORNGROUP BRAND

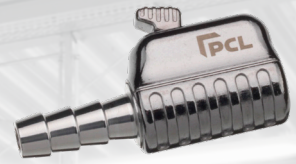
Features & Benefits

- Once the PCL AIR CHUCK is on, it stays on! - No leakage
- Simple but effective thumb push button - quickly releases the tyre valve, reducing non-value added time
- Simply turn clockwise to achieve even more grip
- Undergone extensive in house and external testing - Reliable
- This open end connector is suitable for use with the MK4 Tyre Inflator, PCL wall gauges and PCL portable gauges
- Suitable for use in tyreshops

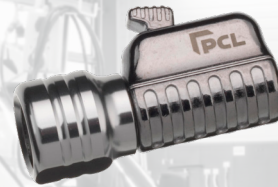
Part No.	Description	Thread type
CH2K01	Straight air chuck	For 7.9mm / 5/16" bore hose
CH2H01	Straight air chuck	For 6.35mm/ 1/4" bore hose
CH2A01	Straight air chuck	Rp 1/4 Inlet
CH4K01	Angled air chuck	For 7.9mm / 5/16" bore hose
CH4H01	Angled air chuck	For 6.35mm/ 1/4" bore hose
CH4A01	Angled air chuck	Rp 1/4 Inlet



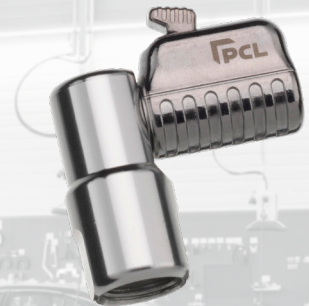
CH2K01



CH2H01



CH2A01



CH4A01



CH4K01



CH4H01

PCL is the world leader in the design and manufacture of tyre inflation and compressed air products.

Pneumatic Components Limited
 Holbrook Rise
 Holbrook Industrial Estate
 Sheffield S20 3GE

T +44 (0)114 248 2712
info@pclairtechnology.com
www.pclairtechnology.com